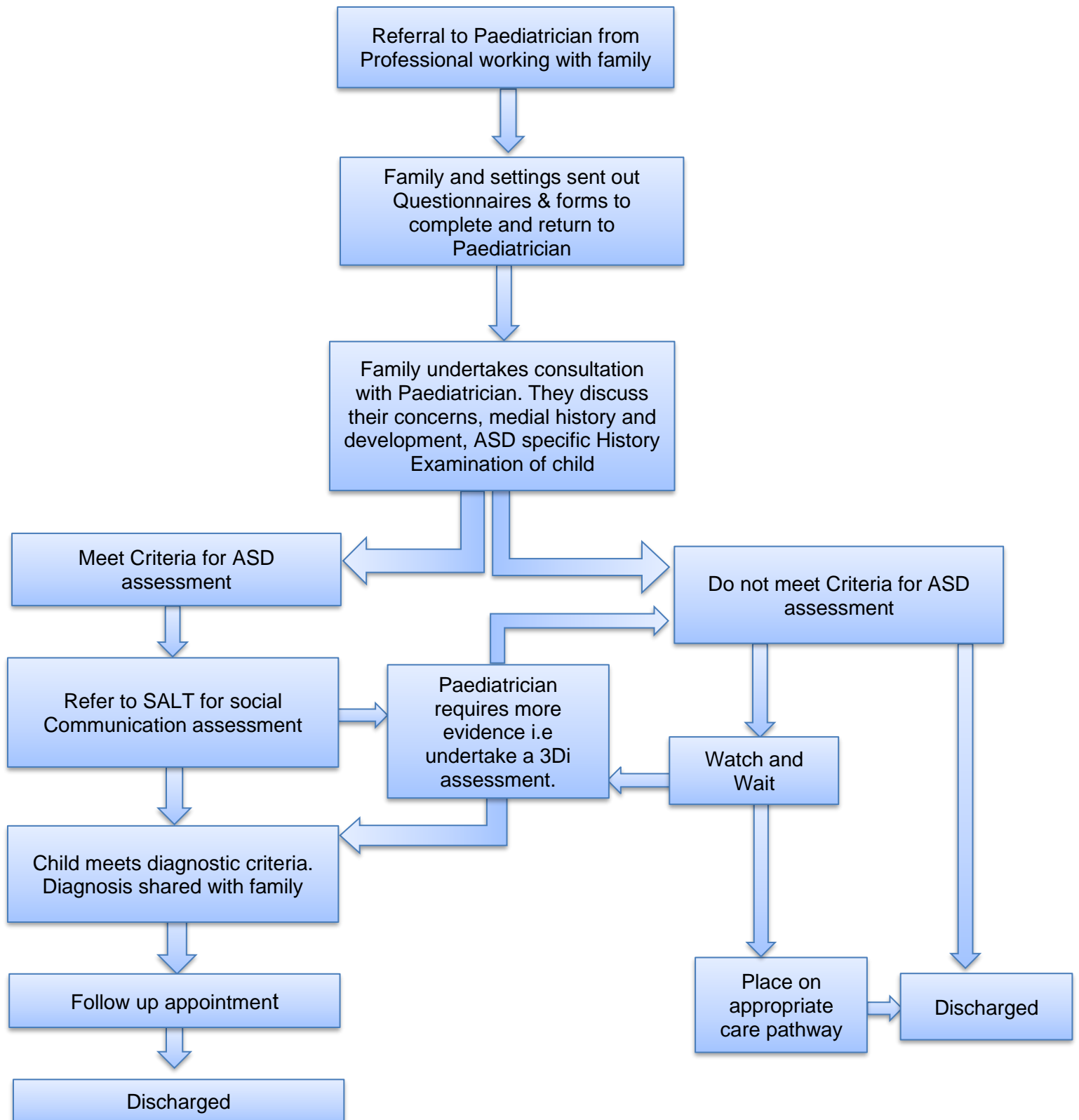


Appendix 2: 0- 18 Virgin Care Children's ASD Diagnostic Pathway

ASD Diagnostic Pathway for 0-18 years (VC)



Appendix 4: 0- 18 Flowchart CAMHS Diagnostic Pathway

CAMHS NEURODEVELOPMENTAL CLINIC (NDC) FLOWCHART

CAMHS Clinician discusses client with NDC team in a consultation meeting
(Paediatrician discusses client through the complex cases meeting or via a phone call with one of the NDC team members)

Is information suggestive of an ASD?

Yes

Pre-referral forms (referral form; developmental history; current school information) + collecting relevant reports e.g. SALT, OT, Ed. Psych / Cognitive assessments; Paediatric reports & reception/year 1 school reports

(If indicated, School observation completed)

NDC appointment letter sent to the family accepting the young person in to the NDC & offering a one- day assessment

One-day NDC assessment to include:

- ADOS
- Developmental History meeting with parents / carers
- Feedback meeting to share observations and conclusions
- (may also include a cognitive assessment if indicated)

- NDC report written within 2-3 weeks
- Discharge from NDC
- Hand-back to Care Co-ordinator who offers a follow-up meeting (with member of NDC team if requested)

No

NDC letter sent to the family explaining why the young person hasn't been accepted in to the NDC with recommendations

Discharge from NDC

Hand-back to CAMHS Care Co-ordinator who offers follow-up contact / meeting (with member of NDC team if requested)

